

Risk Adjustment Factors for House Calls: Hierarchical Condition Categories (HCC) Coding Guide –2024

Purpose

Hierarchical Condition Category (HCC) Coding is the risk adjustment methodology used by the Centers for Medicare and Medicaid Services (CMS) and other programs to determine the annual capitated payments for Medicare Advantage beneficiaries and to determine expected costs in Medicare Shared Savings Programs (ACOs) and newer Alternative Payment Models (APMs). Capturing HCC scores for your patients accurately reflects the severity of care to ensure appropriate funds are available for complex populations and helps your practice be more successful in APM participation or value-based models. This tool was developed to define what conditions carry a risk adjustment weight and provide common example diagnosis codes for home-based primary care. Understanding which conditions risk adjust will help your practice improve their diagnosis coding accuracy and reflect the severity of the complex patient population in which you provide care. Refer to CMS guidelines¹ for full details and requirements.

- The Centers for Medicare & Medicaid Services (CMS) uses a Hierarchical Condition Category (HCC) risk adjustment model to calculate patient risk scores to predict health care costs based on acuity and the patient's health status. Scores are used to adjust capitated payments for Medicare Advantage, determine expected costs in Medicare Shared Savings Programs (ACOs), and determine payment tiers for Alternative Payment Models (APM's).
- Total Risk Adjustment Factor (RAF) Score = Demographics + Diagnoses + Interactions + Multiple HCC's (4-10 HCC's or Chronic Conditions)
- The diagnosis examples above may be listed as unspecified only as examples since each patient's condition varies based on their own unique needs and disease progression. It's critical to code each ICD-10 diagnosis to the highest level of specificity in order to reflect an accurate risk score. Unspecified diagnosis codes should be avoided, and providers should code each active condition or health factors that impact their medical decision making or clinical judgment during visits. Assigning ICD-10 diagnoses is done at the encounter level. Every condition the patient has does not need to be present on every claim. Only assign HCC diagnosis codes when the condition is meaningfully addressed or considered, as the HCC codes reported must be supported and validated by the provider's documentation during visits.
- As a best practice when considering if the provider's documentation supports the HCC code reported, remember the MEAT acronym (Monitor, Evaluate, Assess/Address, and Treat). The provider's assessment and plan and other details included in the face-to-face progress note should support the evaluation, consideration, and/or treatment plan for the condition coded.
- CMS Risk Adjustment model details, announcements, and excel files, including a complete list of all ICD-10 diagnosis codes that carry a risk adjustment weight, can be found on CMS's Risk Adjustment Webpage: <https://www.cms.gov/medicare/payment/medicare-advantage-rates-statistics/risk-adjustment> (Click on the "Current Payment Year, Model Software/ ICD-10 Mappings" file for a complete listing)

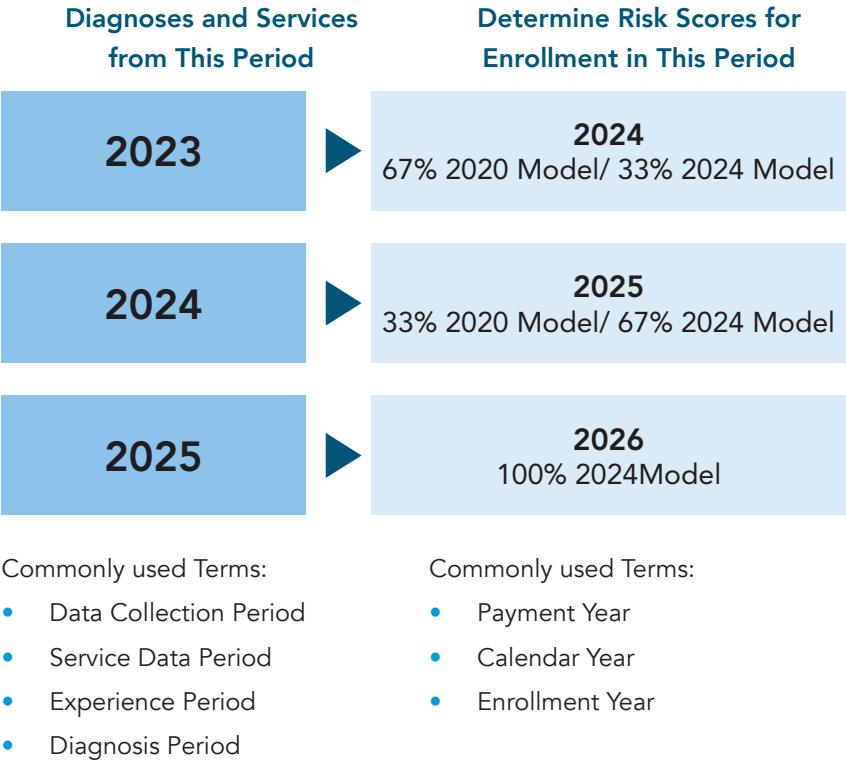
¹ <https://www.cms.gov/medicare/health-plans/medicareadvtspecratestats/risk-adjustors-items/cpt-hccps>

Medicare HCC Model Transition Changes 2023 – 2026

Medicare adjusts the HCC model annually, often removing or adding mapped ICD-10 codes to HCCs, adjusting RAF scores associated with HCCs, and potentially removing or adding HCCs themselves.

In 2023, Medicare started a three-year rollout plan to change the HCC structure from the 2020 model (V24) to the 2024 model (V28). The graph to the right shows the three-year rollout plan and the financial impact of each model in each year.

Staying up-to-date on Medicare HCC changes can be difficult, but the best practice is to designate someone to review any HCC changes annually to help support your practice as new information is released.



Interactions:

The CMS-HCC Model has specified interactions that increase a patient's risk score when the combinations exist. Below is a list of the interactions

Disease Interactions	
Model v24 (2023)	Model v28 (2024)
<ul style="list-style-type: none"> • Immune Disorders/Cancer • Congestive Heart Failure (CHF) & Diabetes • Congestive Heart Failure & Chronic Obstructive Pulmonary Disease (COPD) • CHF & Renal • Cardiorespiratory Failure & COPD • CHF & Specified Heart Arrhythmias • Substance Use Disorder & Psychiatric • Sepsis & Pressure Ulcer • Sepsis & Artificial Openings for Feeding or Elimination • Artificial Openings for Feeding or Elimination & Pressure Ulcer • COPD & Aspiration and Specified Bacterial Pneumonias • Aspiration and Specified Bacterial Pneumonias & Pressure Ulcer • Sepsis & Aspiration and Specified Bacterial Pneumonias • Schizophrenia & COPD • Schizophrenia & CHF • Schizophrenia & Seizure Disorders and Convulsions 	<ul style="list-style-type: none"> • Diabetes & Heart Failure • Heart Failure & Chronic Lung Disorder • Heart Failure & Kidney • Chronic Lung Disorder & Cardiorespiratory Failure • Heart Failure & Specified Heart Arrhythmias • Substance Use Disorder & Psychiatric

Disability Status Interactions	
Model v24 (2023)	Model v28 (2024)
<ul style="list-style-type: none"> • Disabled & Congestive Heart Failure • Disabled & Pressure Ulcer • Disabled & Chronic Ulcer of the Skin, Except Pressure Ulcer • Disabled & Bone/Joint Muscle Infections/Necrosis • Disabled & Multiple Sclerosis • Disabled & Opportunistic Infections 	<ul style="list-style-type: none"> • Disabled & Heart Failure • Disabled, Skin Ulcer • Disabled & Skin Cancer • Disabled & Neurological • Disabled & Chronic Lung Disorder

Implementation Tips for Providers:

- Meet with your providers and clinical team to ensure they understand the impact proper ICD-10 diagnosis coding has on demonstrating the risk of their patient population.
- If possible, utilize your EHR (Electronic Health Record) to highlight HCC conditions.
- Implement a process to code every chronic condition and diagnosis that patients have at least once annually. Annual Wellness Visits (AWV) provide a great opportunity to ask your providers to update problem lists and ensure chronic conditions are coded to the highest level of specificity, capturing any complications. (e.g., Hypertensive heart and CKD with heart failure and stage 1-4 CKD; ICD-10: I13.0)
- When selecting ICD-10 codes to associate with each Evaluation and Management (E/M) encounter, report each condition or diagnosis that coexist at the time of treatment or affect patient management or treatment. The documentation should support each diagnosis that was considered during the visit.
- Ensure Assessments & Plans (A/P) clearly identify/diagnose the specific condition, reflect the status based on the providers' clinical judgment and evaluation, and have a clear treatment plan or explains why a condition was considered in their personalized care of the patient.
- Conduct ongoing internal auditing and monitoring as part of the practice compliance plan. Ensure providers receive timely feedback and education on identified areas of opportunity for improvement.
- Maintain accurate and up-to-date problem lists by reviewing during time of encounter with patient and/or caregiver.
- Do not code a condition if it does not relate to the services rendered during each encounter.
- Cross-train other team members who may be available to help prepare charts or assist providers in correct code selection.

Hierarchical Condition Category (HCC) Coding Chart 2023 - Model V24

HCC Category	HCC Category Descriptor / Example Diagnoses	Relative Factor (RF) V24	ICD-10
1	HIV/AIDS	0.355	
	Human immunodeficiency virus [HIV] disease		B20
2	Septicemia, Sepsis, Systemic, Inflammatory Response Syndrome/Shock	0.352	
	Gram-negative sepsis, unspecified		A41.50
	Sepsis, unspecified organism		A41.9
6	Opportunistic Infections	0.424	
	Pneumocystis		B59
8	Metastatic Cancer and Acute Leukemia	2.659	
	Secondary malignant neoplasm of unspecified site		C79.9
9	Lung and Other Severe Cancers	1.024	
	Malignant neoplasm of lower lobe, unspecified bronchus or lung		C34.30
	Multiple myeloma in remission		C90.01
	Other Severe (e.g., Mesothelioma, Pancreas, Gallbladder, Liver, Stomach, Esophagus, Small intestine)		
10	Lymphoma and Other Cancers	0.675	
	Secondary and unspecified malignant neoplasm of lymph node, unspecified		C77.9
	Hodgkin lymphoma, unspecified, unspecified site		C81.90
	non-Hodgkin lymphoma, unspecified, unspecified site		C85.90
	Other (e.g., brain, Endocrine, Ovary, Connective & Soft tissue, Peripheral nerves)		
11	Colorectal, bladder, and Other Cancers	0.307	
	Malignant neoplasm of colon, unspecified		C18.9
	Malignant neoplasm of bladder, unspecified		C67.9
	Malignant neoplasm of unspecified kidney, except renal pelvis		C64.9
	Other (e.g., Mouth, Tongue, Salivary Glands, nasopharynx, Sinuses, Ear, Labia, Cervix)		
12	Breast, Prostate, and Other Cancers and Tumors	0.15	
	Malignant neoplasm of unspecified site of unspecified female breast		C50.919
	Malignant neoplasm of prostate		C61
	Other (e.g., Penis, Eye, Musculoskeletal, Melanoma, Brain benign, Merkel cell, Carcinoid)		
17	Diabetes with Acute Complications	0.302	
	Type 1 diabetes mellitus with ketoacidosis without coma		E10.10
	Type 2 diabetes mellitus with ketoacidosis without coma		E11.10
18	Diabetes with Chronic Complications	0.302	
	Type 2 diabetes mellitus with diabetic chronic kidney disease		E11.22
	Type 2 diabetes mellitus with other circulatory complications		E11.59
19	Diabetes without Complication	0.105	
	Type 2 diabetes mellitus without complications		E11.9
21	Protein-Calorie Malnutrition	0.455	
	Mild protein-calorie malnutrition		E44.1
22	Morbid Obesity	0.25	
	Body mass index (BMI) 40.0-44.9, adult		Z68.41
	Morbid (severe) obesity due to excess calories (Class 2) (BMI 35-39.9)		E66.01
23	Other Significant Endocrine and Metabolic Disorders	0.194	
	Hyperparathyroidism, unspecified		E21.3
	Secondary hyperparathyroidism of renal origin		N25.81

HCC Category	HCC Category Descriptor / Example Diagnoses	Relative Factor (RF) V24	ICD-10
27	End-Stage Liver Disease	0.882	
	Chronic hepatic failure without coma		K72.10
28	Cirrhosis of Liver	0.363	
	Alcoholic cirrhosis of liver without ascites		K70.30
	Other cirrhosis of liver		K74.69
	Unspecified cirrhosis of liver		K74.60
29	Chronic Hepatitis	0.147	
	Chronic viral hepatitis, unspecified		B18.9
33	Intestinal Obstruction/Perforation	0.219	
	Fecal impaction		K56.41
34	Chronic Pancreatitis	0.287	
	Other chronic pancreatitis		K86.1
35	Inflammatory Bowel Disease	0.308	
	Crohn's disease, unspecified, without complications		K50.90
	Other ulcerative colitis without complications		K51.80
39	Bone/Join/Muscle Infections/Necrosis	0.401	
	Arthritis due to other bacteria, unspecified joint		M00.80
	Reactive arthropathy, unspecified		M02.9
	Osteomyelitis, unspecified		M86.9
40	Rheumatoid Arthritis and Inflammatory Connective Tissue Disease	0.421	
	Rheumatoid arthritis with rheumatoid factor, unspecified		M05.9
	Rheumatoid arthritis without rheumatoid factor, unspecified site		M06.00
	Rheumatoid arthritis of unspecified site with involvement of other organs and systems (Specify joint/site)		M05.60
46	Severe Hematological Disorders	1.372	
	Refractory anemia, unspecified		D46.4
	Sickle-cell disease without crisis		D57.1
47	Disorders of Immunity	0.665	
	Antineoplastic chemotherapy induced pancytopenia		D61.810
	Neutropenia, unspecified		D70.9
	Immunodeficiency due to conditions classified elsewhere (cancer, malnutrition, SLE, RA)		D84.81
	Immunodeficiency due to drugs (chemo, immunosuppressants)		D84.821
	Immunodeficiency due to external causes (radiation)		D84.822
48	Coagulation Defects and Other Specified Hematologic Disorders	0.192	
	Sickle-cell trait		D57.3
	Senile Purpura		D69.2
	Thrombocytopenia, unspecified		D69.6
	Secondary hypercoagulable state (Afib with 1' CHA2DS2-VASc score)		D68.69
51	Dementia with Complications		
	Dementia in other diseases classified elsewhere with behavioral disturbance		F02.81
52	Dementia without Complication	0.346	
	Dementia in other diseases classified elsewhere with behavioral disturbance		F02.80
	Degenerative disease of nervous system, unspecified (Acquired cerebral atrophy)		G31.9
	Alzheimer's disease, unspecified (Code first Alzheimer's G30-, the "code also" dementia)		G30.9
54	Drug/Alcohol with Psychotic complications	0.329	
	Alcohol dependence with withdrawal delirium		F10.231
	Cannabis abuse with psychotic disorder, unspecified		F12.159

HCC Category	HCC Category Descriptor / Example Diagnoses	Relative Factor (RF) V24	ICD-10
55	Substance Use Disorder, Moderate/Severe, or Substance Use with Complications	0.329	
	Alcohol dependence, uncomplicated		F10.20
	Alcohol dependence, in remission		F10.21
	Opioid dependence, uncomplicated (chronic opioid use)		F11.20
	Opioid dependence, in remission		F11.21
56	Substance Use Disorder, Mild, Except Alcohol and Cannabis	0.329	
	Other psychoactive substance abuse, uncomplicated (can specify amphetamines, barbiturates, cocaine, hallucinogens, opioids, etc.)		F19.10
57	Schizophrenia	0.524	
	Schizophrenia, unspecified		F20.9
58	Reactive and Unspecified Psychosis	0.393	
	Atypical psychosis		F29
59	Major Depressive, Bipolar, and Paranoid Disorders	0.309	
	Major depressive disorder, recurrent, mild		F33.0
	Major depressive disorder, single episode, in full remission		F32.5
60	Personality Disorders	0.309	
	Personality disorder, Unspec. (others: Antisocial, Borderline, Manipulative, Narcissistic, etc.)		F60.9
70	Quadriplegia	1.242	
	Quadriplegia, unspecified		G82.50
	Functional quadriplegia (e.g., advanced MS, ALS, dementia, muscular dystrophy)		R53.2
71	Paraplegia	1.068	
	Paraplegia, unspecified		G82.20
72	Spinal cord Disorders/ Injuries	0.481	
	Unspecified injury at unspecified level of thoracic spinal cord, sequela		S24.109S
	Complete lesion of unspecified level of lumbar spinal cord, sequela		S34.119S
	Incomplete lesion of unspecified level of lumbar spinal cord, subsequent encounter		S34.129D
73	Amyotrophic Lateral Sclerosis and Other Motor Neuron Disease	0.999	
	Amyotrophic lateral sclerosis		G12.21
74	Cerebral Palsy	0.339	G80.9
75	Myasthenia Gravis/Myoneural Disorders and Guillain-Barre Syndrome, Inflammatory and Toxic	0.472	
	Neuropathy		
	Myasthenia gravis without (acute) exacerbation		G70.00
	Myoneural disorder, unspecified		G70.9
76	Muscular Dystrophy	0.518	G71.0
77	Multiple Sclerosis	0.423	G35
78	Parkinson's and Huntington's Diseases	0.606	
	Parkinson s disease		G20
	Huntington s disease		G10
79	Seizure Disorders and Convulsions	0.22	
	Other seizures		G40.89
	Epilepsy, unspecified, not intractable, without status epilepticus		G40.909
80	Coma, Brain Compression/Anoxic Damage	0.486	
	Persistent vegetative state		R40.3
	Anoxic brain damage, not elsewhere classified		G93.1
82	Respirator Dependence/Tracheostomy Status	1	Z93.0
	Encounter for attention to tracheostomy		Z43.0
	Dependence on respirator [ventilator] status		Z99.11

HCC Category	HCC Category Descriptor / Example Diagnoses	Relative Factor (RF) V24	ICD-10
83	Respiratory Arrest	0.354	R09.2
84	Cardio-Respiratory Failure and Shock	0.282	
	Chronic respiratory failure with hypoxia (home O2 for pulse ox ≥ 88)		J96.11
	Chronic respiratory failure with hypercapnia		J96.12
85	Congestive Heart Failure	0.331	
	Hypertensive heart disease with heart failure		I11.0
	Cardiomyopathy, unspecified		I42.9
	Chronic Systolic (congestive) heart failure		I50.22
	Unspecified diastolic (congestive) heart failure		I50.30
	Heart failure, unspecified		I50.9
	Acute on chronic diastolic (congestive) heart failure (Code any type of congestive heart failure)		I50.33
	Hypertensive heart and chronic kidney disease with heart failure and stage 1 through stage 4 chronic kidney disease, or unspecified chronic kidney disease - Code also specified type of CKD and heart failure		I13.0
86	Acute Myocardial Infarction (Only coded as inpatient when receiving active treatment)	0.195	
	Other myocardial infarction type		I21.A9
87	Unstable Angina and Other Acute Ischemic Heart Disease	0.195	
	Unstable angina		I20.0
88	Angina Pectoris	0.135	
	Angina pectoris, unspecified (e.g., patient on NTG)		I20.9
	Stable angina (patient on NTG)		I20.8
96	Specified Heart Arrhythmias	0.268	
	Chronic atrial fibrillation, unspecified (Specify type if known)		I48.20
	Sick sinus syndrome		I49.1
	Supraventricular Tachycardia		I47.1
99	Intracranial Hemorrhage (Only coded as inpatient when receiving active treatment, refer to sequela or late effect diagnosis)	0.23	
100	Ischemic or Unspecified Stroke (Only coded as inpatient when receiving active treatment, refer to sequela or late effect diagnosis)	0.23	
103	Hemiplegia/Hemiparesis	0.437	
	Hemiplegia and hemiparesis following unspec. cerebrovascular disease affecting unspec. side		169.359
104	Monoplegia, Other Paralytic Syndromes	0.331	
	Monoplegia of lower limb following cerebral infarction affecting unspecified side		169.349
106	Atherosclerosis of the Extremities with Ulceration or Gangrene	1.488	
	Gas gangrene		A48.0
	Gangrene, not elsewhere classified		196
	Atherosclerosis of native arteries of other extremities with ulceration (specify leg/site)		170.25
107	Vascular Disease with Complications	0.383	
	Chronic pulmonary embolism		127.82
	Embolism and thrombosis of arteries of extremities, unspecified		174.4
	Varicose veins of unspecified lower extremity with ulcer of unspecified site		183.009
108	Vascular Disease	0.288	
	Atherosclerosis of aorta		170
	Aortic aneurysm of unspecified site, without rupture		171.9
	Peripheral vascular disease, unspecified		173.9
	Phlebitis & thrombophlebitis of unspecified deep vessels of unspecified lower extremity		180.209
	Acute embolism & thrombosis of unspecified deep veins of unspecified lower extremity		182.409
	Chronic embolism & thrombosis of unspecified deep veins of unspecified lower		182.509
110	Cystic Fibrosis (unspecified)	0.51	E84.9

HCC Category	HCC Category Descriptor / Example Diagnoses	Relative Factor (RF) V24	ICD-10
111	Chronic Obstructive Pulmonary Disease	0.335	
	Emphysema, unspecified		J43.9
	Chronic obstructive pulmonary disease, unspecified		J44.9
112	Fibrosis of Lung and Other Chronic Lung Disorders	0.219	
	Pulmonary fibrosis, unspecified		J84.10
	Interstitial pulmonary disease, unspecified		J84.9
114	Aspiration and Specified Bacterial Pneumonias	0.517	
	Pneumonitis due to inhalation of food and vomit		J69.0
115	Pneumococcal Pneumonia, Empyema, Lung Abscess	0.13	
	Pneumonia due to Streptococcus pneumoniae		J13
	Abscess of lung with pneumonia		J85.1
122	Proliferative Diabetic Retinopathy and Vitreous Hemorrhage	0.222	
	Vitreous hemorrhage, unspecified eye		H43.10
	Vitreous hemorrhage, bilateral		H43.13
124	Exudative Macular Degeneration	0.521	
	Exudative age-related macular degeneration, unspecified eye, stage		H35.329
134	Dialysis Status	0.435	
	Other mechanical complication of intraperitoneal dialysis catheter, sequela		T85.691S
135	Acute Renal Failure	0.435	N17.9
136	Chronic Kidney Disease, Stage 5	0.289	N18.5
137	Chronic Kidney Disease, Severe (Stage 4)	0.289	N18.4
138	Chronic kidney disease, Moderate GFR 45-59 (Stage 3a)	0.069	N18.31
	Chronic kidney disease, Moderate GFR 30-44 (Stage 3b)	0.069	N18.32
157	Pressure Ulcer of Skin with Necrosis Through to Muscle, Tendon, or Bone	2.028	
	Pressure ulcer of unspecified site, stage 4		L89.94
158	Pressure Ulcer of Skin with Full Thickness Skin Loss	1.069	
	Pressure ulcer of unspecified site, stage 3 (specify location and stage of all pressure ulcers when coding)		L89.93
	Pressure ulcer of unspecified site, unstageable		L89.95
159	Pressure Ulcer of Skin with Partial Thickness Skin Loss	0.656	
	Pressure ulcer of unspecified site, stage 2		L89.92
161	Chronic Ulcer of Skin, Except Pressure	0.515	
	Type 2 Diabetes with foot ulcer		E11.621
	Venous stasis ulcer of lower limb		I87.319
162	Severe Skin Burn or Condition	0.224	
	Burns involving 10-19% of body surface with 10-19% third degree burns		T31.11
166	Severe Head Injury (initial encounter, usually minimum 6 hours loss of consciousness)	0.486	
167	Major Head Injury	0.077	
	Unspecified fracture of skull, sequela		S02.91XS
	Unspecified fracture of facial bones, sequela		S02.92XS
	Diffuse traumatic brain injury without loss of consciousness, sequela		S06.2X0S
	Diffuse traumatic brain injury with loss of consciousness of unspecified duration, sequela		S06.2X9S
	Traumatic subdural hemorrhage without loss of consciousness, sequela		S06.5X0S
169	Vertebral Fractures without Spinal Cord Injury (Initial encounters only)	0.476	
170	Hip Fracture/Dislocation (Initial encounters only)	0.35	
173	Traumatic Amputations and Complications (Initial encounters only- See HCC 189 category)	0.208	

HCC Category	HCC Category Descriptor / Example Diagnoses	Relative Factor (RF) V24	ICD-10
176	Complications of Specified Implanted Device or Graft	0.582	
	Infection and inflammatory reaction due to indwelling urethral catheter, initial encounter		T83.511A
	Other cystostomy complication		N99.518
186	Major Organ Transplant or Replacement Status	0.832	
188	Artificial Openings for Feeding or Elimination	0.534	
	Gastrostomy Status		Z93.1
	Encounter for attention to gastrostomy		Z43.1
	Encounter for attention to ileostomy		Z43.2
	Encounter for attention to colostomy		Z43.3
	Encounter for attention to cystostomy		Z43.5
189	Amputation Status, Lower Limb/Amputation Complications	0.519	
	Phantom limb syndrome with pain		G54.6
	Partial traumatic transmetacarpal amputation of unspecified hand, sequela		S68.729S
	Partial traumatic amputation of unspecified great toe, subsequent encounter		S98.129D

Hierarchical Condition Category (HCC) Coding Chart 2023 - Model V28

HCC Category	HCC Category Descriptor / Example Diagnoses	Relative Factor (RF) V28	ICD-10
1	HIV/AIDS	0.301	
	Human immunodeficiency virus [HIV] disease		B20
2	Septicemia, Sepsis, Systemic, Inflammatory Response Syndrome/Shock	0.5	
	Gram-negative sepsis, unspecified		A41.50
	Sepsis, unspecified organism		A41.9
6	Opportunistic Infections	0.381	
	Pneumocystis		B59
18	Metastatic Cancer and Acute Leukemia	2.341	
	Secondary malignant neoplasm of unspecified site		C79.9
19	Myelodysplastic Syndromes, Multiple Myeloma, and Other Cancers	1.798	
	Refractory anemia, unspecified		D46.4
20	Lung and Other Severe Cancers	1.136	
	Malignant neoplasm of lower lobe, unspecified bronchus or lung		C34.30
	Multiple myeloma in remission		C90.01
	Other Severe (e.g., Mesothelioma, Pancreas, Gallbladder, Liver, Stomach, Esophagus, Small intestine)		
21	Lymphoma and Other Cancers	0.671	
	Secondary and unspecified malignant neoplasm of lymph node, unspecified		C77.9
	Hodgkin lymphoma, unspecified, unspecified site		C81.90
	non-Hodgkin lymphoma, unspecified, unspecified site		C85.90
	Other (e.g., brain, Endocrine, Ovary, Connective & Soft tissue, Peripheral nerves)		

HCC Category	HCC Category Descriptor / Example Diagnoses	Relative Factor (RF) V28	ICD-10
22	Colorectal, ladder, and Other Cancers	0.363	
	Malignant neoplasm of colon, unspecified		C18.9
	Malignant neoplasm of bladder, unspecified		C67.9
	Malignant neoplasm of unspecified kidney, except renal pelvis		C64.9
	Other (e.g., Mouth, Tongue, Salivary Glands, nasopharynx, Sinuses, Ear, Labia, Cervix)		
23	Breast, Prostate, and Other Cancers and Tumors	0.186	
	Malignant neoplasm of unspecified site of unspecified female breast		C50.919
	Malignant neoplasm of prostate		C61
	Other (e.g., Penis, Eye, Musculoskeletal, Melanoma, Brain benign, Merkel cell, Carcinoid)		
36	Diabetes with Severe Acute Complications	0.166	
	Type 1 diabetes mellitus with ketoacidosis without coma		E10.10
	Type 2 diabetes mellitus with ketoacidosis without coma		E11.10
37	Diabetes with Chronic Complications	0.166	
	Type 2 diabetes mellitus with diabetic chronic kidney disease		E11.22
	Type 2 diabetes mellitus with other circulatory complications		E11.59
38	Diabetes with Glycemic, Unspecified, or No Complications	0.166	
	Type 2 diabetes mellitus without complications		E11.9
48	Morbid Obesity	0.186	
	Body mass index (BMI) 40.0-44.9, adult		Z68.41
	Morbid (severe) obesity due to excess calories (Class 2 (BMI 35-39.9))		E66.01
63	Chronic Liver Failure/EndStage Liver Disorders	0.962	
	Chronic hepatic failure without coma		K72.10
64	Cirrhosis of Liver	0.447	
	Alcoholic cirrhosis of liver without ascites		K70.30
	Other cirrhosis of liver		K74.69
	Unspecified cirrhosis of liver		K74.60
65	Chronic Hepatitis	0.185	
	Chronic viral hepatitis, unspecified		B18.9
78	Intestinal Obstruction/Perforation	0.326	
	Fecal impaction		K56.41
79	Chronic Pancreatitis	0.357	
	Other chronic pancreatitis		K86.1
80	Crohn's Disease (Regional Enteritis)	0.55	
	Crohn's disease, unspecified, without complications		K50.90
81	Ulcerative Colitis	0.244	
	Other ulcerative colitis without complications		K51.80
92	Bone/Joint/Muscle/Severe Soft Tissue Infections/Necrosis	0.479	
	Arthritis due to other bacteria, unspecified joint		M00.80
	Reactive arthropathy, unspecified		M02.9
	Osteomyelitis, unspecified		M86.9
93	Rheumatoid Arthritis and Other Specified Inflammatory Rheumatic Disorders	0.617	
	Rheumatoid arthritis with rheumatoid factor, unspecified		M05.9
	Rheumatoid arthritis without rheumatoid factor, unspecified site		M06.00
	Rheumatoid arthritis of unspecified site with involvement of other organs and systems (Specify joint/site)		M05.60
107	Sickle Cell Anemia (Hb-SS) and Thalassemia Beta Zero	0.457	
	Sickle-cell disease without crisis		D57.1

HCC Category	HCC Category Descriptor / Example Diagnoses	Relative Factor (RF) V28	ICD-10
127	Dementia, Mild or Unspecified	0.341	
	Dementia in other diseases classified elsewhere with behavioral disturbance		F02.81
	Dementia in other diseases classified elsewhere with behavioral disturbance		F02.80
	Alzheimer's disease, unspecified (Code first Alzheimer's G30-, the "code also" dementia)		G30.9
136	Alcohol Use with Psychotic Complications	0.424	
	Alcohol dependence with withdrawal delirium		F10.231
135	Drug Use with Psychotic Complications	0.424	
	Cannabis abuse with psychotic disorder, unspecified		F12.159
139	Alcohol Use Disorder, Moderate/Severe, or Alcohol Use with Specified NonPsychotic Complications	0.242	
	Alcohol dependence, uncomplicated		F10.20
	Alcohol dependence, in remission		F10.21
137	Drug Use Disorder, Moderate/Severe, or Drug Use with Non-Psychotic Complications	0.424	
	Opioid dependence, uncomplicated (chronic opioid use)		F11.20
	Opioid dependence, in remission		F11.21
138	Drug Use Disorder, Mild, Uncomplicated, Except Cannabis	0.423	
	Other psychoactive substance abuse, uncomplicated (can specify amphetamines, barbiturates, cocaine, hallucinogens, opioids, etc.)		F19.10
151	Schizophrenia	0.511	
	Schizophrenia, unspecified		F20.9
152	Psychosis, Except Schizophrenia	0.484	
	Atypical psychosis		F29
153	Personality Disorders; Anorexia/Bulimia Nervosa	0.396	
	Personality disorder, Unspec. (others: Antisocial, Borderline, Manipulative, Narcissistic, etc.)		F60.9
180	Quadriplegia	1.125	
	Quadriplegia, unspecified		G82.50
	Functional quadriplegia (e.g., advanced MS, ALS, dementia, muscular dystrophy)		R53.2
181	Paraplegia	0.942	
	Paraplegia, unspecified		G82.20
182	Spinal Cord Disorders/Injuries	0.478	
	Incomplete lesion of unspecified level of lumbar spinal cord, subsequent encounter		S34.129D
190	Amyotrophic Lateral Sclerosis and Other Motor Neuron Disease, Spinal Muscular Atrophy	1.175	
	Amyotrophic lateral sclerosis		G12.21
192	Cerebral Palsy, Except Quadriplegic	0.314	G80.9
196	Myasthenia Gravis without (Acute) Exacerbation and Other Myoneural Disorders	0.516	
	Neuropathy		
	Myasthenia gravis without (acute) exacerbation		G70.00
	Myoneural disorder, unspecified		G70.9
197	Muscular Dystrophy	0.426	G71.00
198	Multiple Sclerosis	0.647	G35
199	Parkinson and Other Degenerative Disease of Basal Ganglia	0.615	
	Parkinson s disease		G20
200	Friedreich and Other Hereditary Ataxias; Huntington Disease	0.279	
	Huntington s disease		G10
201	Seizure Disorders and Convulsions	0.245	
	Other seizures		G40.89
	Epilepsy, unspecified, not intractable, without status epilepticus		G40.909

HCC Category	HCC Category Descriptor / Example Diagnoses	Relative Factor (RF) V28	ICD-10
202	Coma, Brain Compression/Anoxic Damage	0.543	
	Persistent vegetative state		R40.3
	Anoxic brain damage, not elsewhere classified		G93.1
211	Respirator Dependence/Tracheostomy Status/Complications	0.879	
	Tracheostomy Status		Z93.0
	Encounter for attention to tracheostomy		Z43.0
	Dependence on respirator [ventilator] status		Z99.11
212	Respiratory Arrest	0.370	R09.2
213	Cardio-Respiratory Failure and Shock	0.370	
	Chronic respiratory failure with hypoxia (home O2 for pulse ox ≥ 88)		J96.11
	Chronic respiratory failure with hypercapnia		J96.12
224	Acute on Chronic Heart Failure	0.360	
	Acute on chronic diastolic (congestive) heart failure (Code any type of congestive heart failure)		I50.33
226	Heart Failure, Except End-Stage and Acute	0.360	
	Hypertensive heart disease with heart failure		I11.0
	Chronic Systolic (congestive) heart failure		I50.22
	Unspecified diastolic (congestive) heart failure		I50.30
	Heart failure, unspecified		I50.9
	Hypertensive heart and chronic kidney disease with heart failure and stage 1 through stage 4 chronic kidney disease, or unspecified chronic kidney disease - Code also specified type of CKD and heart failure		I13.0
227	Cardiomyopathy/Myocarditis	0.189	
	Cardiomyopathy, unspecified		I42.9
228	Acute Myocardial Infarction (Only coded as inpatient when receiving active treatment)	0.252	
	Other myocardial infarction type		I21.A9
229	Unstable Angina and Other Acute Ischemic Heart Disease	0.240	
	Unstable angina		I20.0
238	Specified Heart Arrhythmias	0.299	
	Chronic atrial fibrillation, unspecified (Specify type if known)		I48.20
248	Intracranial Hemorrhage (Only coded as inpatient when receiving active treatment, refer to sequela or late effect diagnosis)	0.239	
249	Ischemic or Unspecified Stroke (Only coded as inpatient when receiving active treatment, refer to sequela or late effect diagnosis)	0.239	
253	Hemiplegia/Hemiparesis	0.387	
	Hemiplegia and hemiparesis following unspec. cerebrovascular disease affecting unspec. side		I69.359
254	Monoplegia, Other Paralytic Syndromes	0.321	
	Monoplegia of lower limb following cerebral infarction affecting unspecified side		I69.349
263	Atherosclerosis of Arteries of the Extremities with Ulceration or Gangrene	1.118	
	Gas gangrene		A48.0
	Gangrene, not elsewhere classified		I96
	Atherosclerosis of native arteries of other extremities with ulceration (specify leg/site)		I70.25
264	Vascular Disease with Complications	0.455	
	Embolism and thrombosis of arteries of extremities, unspecified		I74.4
267	Deep Vein Thrombosis and Pulmonary Embolism	0.294	
	Chronic pulmonary embolism		I27.82
	Phlebitis & thrombophlebitis of unspecified deep vessels of unspecified lower extremity		I80.209
	Acute embolism & thrombosis of unspecified deep veins of unspecified lower extremity		I82.409
	Chronic embolism & thrombosis of unspecified deep veins of unspecified lower		I82.509

HCC Category	HCC Category Descriptor / Example Diagnoses	Relative Factor (RF) V28	ICD-10
383	Chronic Ulcer of Skin, Except Pressure, Not Specified as Through to Bone or Muscle	0.646	
	Varicose veins of unspecified lower extremity with ulcer of unspecified site		183.009
277	Cystic Fibrosis (unspecified)	0.998	E84.9
280	Chronic Obstructive Pulmonary Disease, Interstitial Lung Disorders, and Other Chronic Lung Disorders	0.319	
	Emphysema, unspecified		J43.9
	Chronic obstructive pulmonary disease, unspecified		J44.9
	Pulmonary fibrosis, unspecified		J84.10
	Interstitial pulmonary disease, unspecified		J84.9
282	Aspiration and Specified Bacterial Pneumonias	0.440	
	Pneumonitis due to inhalation of food and vomit		J69.0
283	Pneumococcal Pneumonia, Empyema, Lung Abscess	0.204	
	Abscess of lung with pneumonia		J85.1
298	Severe Diabetic Eye Disease, Retinal Vein Occlusion, and Vitreous Hemorrhage	0.336	
	Vitreous hemorrhage, unspecified eye		H43.10
	Vitreous hemorrhage, bilateral		H43.13
300	Exudative Macular Degeneration	0.596	
	Exudative age-related macular degeneration, unspecified eye, stage		H35.3290
326	Chronic Kidney Disease, Stage 5	0.815	N18.5
327	Chronic Kidney Disease, Severe (Stage 4)	0.514	N18.4
328	Chronic kidney disease, Moderate GFR 30-44 (Stage 3b)	0.127	N18.32
329	Chronic kidney disease, Moderate GFR 45-59 (Stage 3a)	0.127	N18.31
379	Pressure Ulcer of Skin with Necrosis Through to Muscle, Tendon, or Bone	1.965	
	Pressure ulcer of unspecified site, stage 4		L89.94
381	Pressure Ulcer of Skin with Full Thickness Skin Loss	1.075	
	Pressure ulcer of unspecified site, stage 3 (specify location and stage of all pressure ulcers when coding)		L89.93
	Pressure ulcer of unspecified site, unstageable		L89.95
382	Pressure Ulcer of Skin with Partial Thickness Skin Loss	0.838	
	Pressure ulcer of unspecified site, stage 2		L89.92
383	Chronic Ulcer of Skin, Except Pressure	0.646	
	Type 2 Diabetes with foot ulcer		E11.621
	Venous stasis ulcer of lower limb		I87.319
385	Severe Skin Burn or Condition	1.291	
	Burns involving 10-19% of body surface with 10-19% third degree burns		T31.11
397	Severe Head Injury (initial encounter, usually minimum 6 hours loss of consciousness)	0.486	
401	Vertebral Fractures without Spinal Cord Injury (Initial encounters only)	0.522	
402	Hip Fracture/Dislocation (Initial encounters only)	0.467	
405	Traumatic Amputations and Complications (Initial encounters only- See HCC 189 category)	0.598	
409	Amputation Status, Lower Limb/Amputation Complications	0.598	
	Phantom limb syndrome with pain		G54.6
454	Major Organ Transplant or Replacement Status	1.068	
463	Artificial Openings for Feeding or Elimination	0.673	
	Gastrostomy Status		Z93.1
	Encounter for attention to gastrostomy		Z43.1
	Encounter for attention to ileostomy		Z43.2
	Encounter for attention to colostomy		Z43.3
	Encounter for attention to cystostomy		Z43.5

*Disclaimer: Please note all the HCC values displayed are approximate as the actual HCC weight and risk score varies based on patient demographics and health status. The HCC values displayed in this resource are for Community, Non-Dual, Aged Beneficiaries.



Hotline

Call (630) 283-9222 or
email Help@HCCIInstitute.org
9:00 am–5:00 pm (CT)
Monday through Friday.



Webinars

HCCI hosts free and premium
webinars on topics relevant to HBPC.
Visit the HCCIntelligence™ Resource
Center for upcoming dates and topics.



Tools & Tip Sheets

Downloadable tools,
tip sheets, sample forms,
and how-to guides on a
variety of HBPC topics.



The
John A. Hartford
Foundation

HCCIntelligence™ is funded in part by a grant from
The John A. Hartford Foundation.

HCCIntelligence™ is for educational and informational purposes only and should not be relied upon as medical advice.
Information is accurate at the time of publication and is subject to change year to year